



**AISM**  
AUSTRALIAN  
INTERNATIONAL SCHOOL  
MALAYSIA

# Australian International School Malaysia

Delivering outstanding Australian education in Malaysia  
for more than 20 years.

Australian International School Malaysia,  
22, Jalan Anggerik, Mines Wellness City,  
43300 Seri Kembangan, Selangor





# THE EDUCATION YEARS

## Comparing the Australian, British and Malaysian schooling years.

Year group placement varies with different schooling systems. The formal years of schooling in the Australian system start at the age of 6 years with the Foundation year. In the British system, children at the same age enter Year 1. However, the total years of formal schooling remains the same in the end.

AGE-TURNS	AUSTRALIAN	BRITISH	MALAYSIAN
4	Nursery	Nursery	Kindergarten
5	Preparation	Reception	Kindergarten
6	Foundation	1	Kindergarten
7	1	2	1
8	2	3	2
9	3	4	3
10	4	5	4
11	5	6	5
12	6 – Middle School	7 – Secondary	6
13	7	8	Form 1 – Secondary
14	8	9	2
15	9 – Senior School	10	3
16	10	11	4
17	11 (HSC Preliminary Course)	12	5
18	12 – HSC	13 – A Levels	6 – Lower
19			6 – Upper (STPM)

■ Start of compulsory formal education

# THE PRE-UNIVERSITY YEARS

## COMPARING VARIOUS INTERNATIONAL PROGRAMS

Pre-University programs vary with different education systems. Popular choices in Malaysia include The Australian New South Wales Higher School Certificate (HSC), Cambridge A Levels and International Baccalaureate (IB) Diploma. It is important to know the differences in order to make the right choice for your child.

### HSC (HIGHER SCHOOL CERTIFICATE) NSW

#### SUBJECTS

English is mandatory (different levels are available). Students need to choose English plus five other subjects.

#### ASSESSMENT



**50% / 50%**

Internal school assessment throughout the final year.

External examination at the end of the final year.

#### GRADING

Students receive an Australian Admissions Tertiary Rank (ATAR) based on their HSC results, which ranks each student against the performance of all other students studying in Australia. The ATAR score is used for entrance into universities globally.

#### OUTCOMES

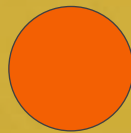
Broad foundation in core subjects with learning opportunities in specialist subjects.

#### TERTIARY EDUCATION



### CAMBRIDGE A LEVELS

No mandatory subjects. Students typically choose three A Level subjects.



**100%**

External examination at the end of the final year.

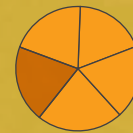
Grades are generally awarded on the basis of examination performance, which benefits students who are good in exam conditions.

Students are given the opportunity to specialise in subjects before determining their career choice.



### IB (INTERNATIONAL BACCALAUREATE) DIPLOMA

Students must choose from six areas including Foreign Language, Arts and Science, plus Theory of Knowledge (ToK), Extended Essay and Service components.



**20% 80%**

Internal school assessment throughout the final year.

External examination at the end of the final year. There are also co-curricular activities included in the assessment.

It is graded on a 45-point scale and a minimum of 24 points is required for award of the Diploma. Without the Diploma, it is difficult for a student to secure a university placement.

Beneficial for students who are strong in broad areas, as students must choose from all 6 domains.





# EARLY LEARNING CENTRE

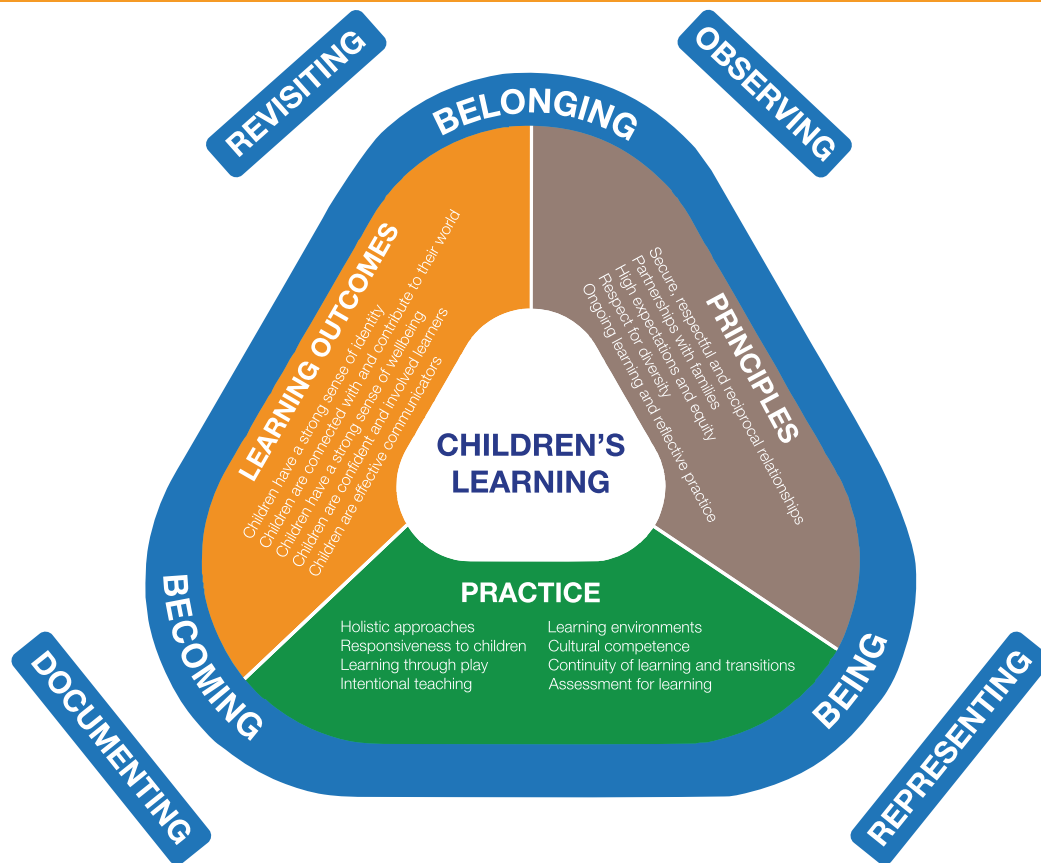
Our aim is to develop children's academic, social, emotional and physical learning through our responsive and inclusive learning program.

Using a combination of the Australian Early Years Learning Framework and the Reggio Emilia approach, children are exposed to a variety of learning experiences based on their interests and needs.

The Early Years Learning Framework is the national framework for early childhood education in Australia. The framework draws on conclusive international evidence that early childhood is a vital period in a child's learning and development. The framework ensures that all children in early education experience quality teaching and learning.



# Our Learning Approach:



## Literacy



- Print concepts taught through multi-sensory and hands-on approach
- Phonological awareness skills
- Pre-writing and beginning writing skills - letters, words and sentences when ready
- Narrative and story structures and sequence
- Blending and segmenting (CVC words when ready)
- Grammar and punctuation
- Literacy focus classes
- Exposure to quality literature
- Library visits

## Numeracy



- Counting and numeracy skills
- Algebraic thinking, measurement, geometry, statistics, probability
- Spatial language
- Language of mathematics

## Physical



- Gross motor development through the Perceptual Motor Program
- Fine motor development
- Introduction to Games and Sports
- Swimming and water awareness program for Preparation students
- Involvement in Whole School Carnivals

## Brain Development & Play



- Learning connections encouraging whole brain development
- Left and right brain development through exercises and activities
- Fine motor development
- Structured/unstructured play based learning
- Sensory play
- Inquiry based learning

## Socio-emotional



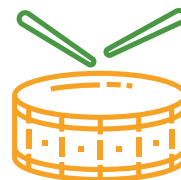
- Sense of being, belonging and becoming
- Problem solving and collaboration
- Forming relationships
- Sharing
- Identifying and understanding emotions
- Reading and responding to social cues

## Broader Experiences



- Productions
- Buddy program
- Incursions such as visits from Bomba, the Police Department, visiting authors and artists

## Music and Movement



- Music appreciation
- Exposure to percussion, music instruments etc.
- Music concerts and performances
- Learning musical concepts of high/low, fast/slow, loud/soft

# Four Enrolment Options:

1

## Full Day Option

8.50am – 3.10pm

Annual Tuition Fee and Technology  
Fee of RM42,104 or RM3,509/month

2

## Morning Option

9.00am-12.00pm

Annual Tuition Fee and Technology Fee of  
RM 25,264 or RM 2,106/month

3

## 3-day Per Week

Annual Tuition Fee and Technology  
RM 25,264 or RM 2,106/month

4

## 2-day Per Week

Annual Tuition Fee and Technology Fee of  
RM16,992 or RM1,416/month



# TUITION & FEES FOR THE ACADEMIC YEAR 2023

## EARLY LEARNING CENTER



### Application Fee (non-refundable)

RM (Ringgit Malaysia)

**Application Fee** (non-refundable)

**1,000.00**

Payable upon submission of the Application Form

**Admission Fee** (non-refundable)

**10,000.00**

• Upon entering year 1, an additional Admission Fee of RM10,000 is applicable.

**Instalment payment is available.**

• **Admission Fee is waived for one student in the Early Learning Center with siblings paying Admission Fee in the school.**

### Deposit (refundable)

An equivalent of one term's tuition fee is required as deposit (refer to the table below). The amount is to be topped up as the tuition fee increases according to year level.

Note: Deposit is refundable provided one term's written notice of withdrawal is given in advance. The said notice must be received and acknowledged by the Admissions Office on or prior to the commencement of the term the student will be withdrawn; failing which the deposit paid shall be forfeited. Please refer to the terms and conditions as stated on the application for Admissions form.

### Tuition Fees

All fees paid are non-refundable once the term starts.

### Family (Sibling) Discount

Family (Sibling) Discount is available to families with two or more children attending AISM at the same time. The following applies:

- Siblings are entitled to a discount on the Admission Fee and tuition fee. It is only applicable to siblings who are still studying in the school. A sibling is defined as a legal brother or sister of a child enrolled in the school.

#### Siblings Discount

No. of Children	Admission Fee (Applicable to NEW students)	Tuition Fee Only
1st sibling (2nd born)	30% Discount	5% Discount
2nd sibling (3rd born)	50% Discount	5% Discount
3rd and subsequent siblings(4th born onwards)	75% Discount	5% Discount

*\*Admission Fee is waived for one ELC student with siblings paying Admission Fee in the school.*

#### Annual Tuition Fees and Technology Fee (4 terms per academic year)

##### Early Learning Centre (Full Day Option): 8.50am - 3.10pm

Year Level	Tuition Fee per term (RM)	Technology Fee per term (RM)	Annual Tuition and Technology Fee (RM)	Deposit (RM)
Nursery	10,338	188	42,104	10,338
Preparation	10,338	188	42,104	10,338

##### Early Learning Centre (Morning Option): 9.00am - 12.00pm

Year Level	Tuition Fee per term (RM)	Technology Fee per term (RM)	Annual Tuition and Technology Fee (RM)	Deposit (RM)
Nursery	6,203	113	25,264	6,203
Preparation	6,203	113	25,264	6,203

##### Early Learning Centre (3-day Per Week)

Year Level	Tuition Fee per term (RM)	Technology Fee per term (RM)	Annual Tuition and Technology Fee (RM)	Deposit (RM)
Nursery	6,203	113	25,264	6,203
Preparation	6,203	113	25,264	6,203

##### Early Learning Centre (2-day Per Week)

Year Level	Tuition Fee per term (RM)	Technology Fee per term (RM)	Annual Tuition and Technology Fee (RM)	Deposit (RM)
Nursery	4,135	113	16,992	4,135
Preparation	4,135	113	16,992	4,135





# JUNIOR SCHOOL CURRICULUM

(6 – 11 years old)

## FOUNDATION – YEAR 5

The AISM Junior School is a school of academic excellence, creativity and innovation, student led focus and above all an environment where students are secure to take risks and learn from mistakes - laugh whilst enjoying their learning! We thrive inside and outside the classroom - from sports to arts to coding to competitions - creating and designing for the future - our curriculum is building, on a daily basis to meet the needs of the students and the era in which we live. Central to an Australian education is the development of general capabilities throughout all learning areas. These general capabilities have been identified as essential for success in the future and ensure we develop capable learners, confident and creative individuals, and active and informed citizens. We create the leaders of the future with the skills to make a difference.





## English

The aim of English in the Junior School is to enable students to understand and use language effectively, appreciate, reflect on and enjoy the English language and to make meaning in ways that are imaginative, creative, interpretive, critical and powerful.

Students learn about language through

- activities involving speaking and listening
- reading and writing as well as viewing and representing.
- working with a wide range of print, spoken, visual media, multimedia and digital texts
- the creation of written and digital texts and
- the delivery of formal and informal presentations.

## Mathematics

Students become confident, creative users and communicators of mathematics, able to investigate, represent and interpret situations in their personal and work lives and as active citizens.

Students develop their mathematical knowledge, skills and understanding through a range of learning experiences across:

- » Numbers and Algebra e.g. whole numbers, fractions and decimals
- » Measurements and Geometry e.g. length, area and time
- » Statistics and Probability e.g. data and chance

They develop problem-solving skills, mathematical reasoning and communication.

## Science and Technology

The aim of Science and Technology is to foster in students a sense of wonder and to expand their natural curiosity about the world.

- Students develop their skills by Working Scientifically and Working Technologically to answer questions and solve problems vital to the world.
- They develop their curiosity and understanding about the Environment by learning about the Physical World, Earth and Space, the Living World, the Material World, Built Environments, Information and Products.

## History

Students enjoy exploring historical places, people and events. In doing so, they develop a critical understanding of the past and its impact on the present.

- Students investigate:
  - historical concepts
  - historical events from a different angle
  - skills using historical sources

## Geography

Through geographical inquiry, students develop an understanding of the interactions between people, places and environments.

- Students explore geographical concepts such as places and sustainability, through real-world examples and issues
- Students develop global awareness to become active citizens



## Personal Development, Health and Physical Education

In PDHPE, students develop the knowledge and understanding, skills and values to lead healthy, active and fulfilling lives.

- Active Lifestyle
- Dance
- Games and Sports
- Growth and Development
- Gymnastics
- Interpersonal Relationships
- Personal Health Choices
- Safe Living

## Creative and Performing Arts

Creative and Performing Arts enables students to

- increase their understanding and accomplishment in the arts
- appreciate the meaning and value of artforms
- to view artworks as forms of communication
- Visual Arts
- Music
- Drama
- Dance

## Languages Other Than English (LOTE)

The aim of teaching languages is to enable students to

- develop communication skills
- focus on languages as systems
- gain insights into the relationship between language and culture

Students in the Junior School have the choice to study:

- Bahasa Malaysia
- Mandarin

All Junior School students study the Malaysian Language, Culture, Geography and History.





# MIDDLE SCHOOL CURRICULUM

(12 – 14 years old)

The Middle School at AISM is a distinctive and caring community environment that focuses on nurturing and fully developing the individual potential of all students in a supportive and academically challenging environment.

## Middle Years

Students in the Middle Years are growing towards independence and the challenges of their adult lives. To support their growth and development in these critical years, we have dedicated and highly trained staff who are familiar with the specialised social and academic needs of adolescent learners.

Students are supported in their personal development by homeroom teachers who mentor, monitor and support students as they move through Years 6 – 8. Homeroom teachers provide a point of immediate contact for parents and a means to collaboratively address issues as they arise. Our highly skilled homeroom teachers and subject specialists recognise the transitions facing students as they move from the familiarity and security of their Junior School years and assist them in developing the skills and knowledge to successfully master the challenges of the Senior School and beyond.





## Middle School Curriculum

Students in the Middle School study the Australian Curriculum Stages 3 to 4. The Middle School curriculum provides challenging standards, skills, creativity and flexibility to help students grow towards self-reliance and responsible participation in a global society.

Students in each year level are immersed in a range of challenging outdoor experiences away from the campus and in some distinctive, personal development programs, including leadership opportunities that aim to develop character, resilience and personal integrity as the basis for their adult lives.

## Years 6 – 8

In Years 6 – 8 students have a homeroom teacher who teaches them for at least one other subject and specialist teachers for all other subjects.

- English
- Mathematics
- Science
- Humanities and Social Science – Geography and History
- Languages Other Than English (LOTE):  
Bahasa Malaysia, French, Chinese
- Malaysian Cultural Studies
- Technology
- Design and Technology
- Personal Development, Health and Physical Education
- Creative and Performing Arts
  - Visual Arts
  - Music
  - Drama
- Access to gifted and talented programs
- Access to international competitions such as World Scholars Cup, Model United Nations and more



In the Middle School, there is an emphasis on researching and analysing information and using critical and creative thinking skills as a basis of the research. Students do this by undertaking inquiry projects that are embedded in the curriculum.



# SENIOR SCHOOL CURRICULUM

(15 – 18 years old)

The Senior School includes Years 9 to 12. Students sit for the Higher School Certificate at the end of Year 12, which is an externally set and marked suite of examinations.

In the Senior School, students have more choices regarding the subjects they wish to study.

## Years 9 and 10 – Australian Curriculum

Students in Years 9 and 10 study the following core subjects:

- English
- Mathematics
- Science
- Geography
- History
- Personal Development, Health and Physical Education

In addition, students choose 3 elective subjects. Subjects currently available are:

- Commerce
- Visual Arts
- Drama
- Music
- Literacy Support
- EAL/D
- Information and Software Technology
- Physical Activity and Sports Studies
- Design and Technology
- Languages – French and Chinese

Additional elective subjects may be offered depending on student numbers, demand and teacher availability. Malaysian citizens also undertake Malaysian Cultural Studies.

At the end of Year 10 all students will receive a Record of School Achievement (RoSA Certificate) which signifies the completion of Stage 5 of the Australian Curriculum.

Students at AISM will receive an AISM Diploma and a testamur from the New South Wales Board of Studies, which will show details of courses completed and levels of achievement.



## Years 11 and 12

Year 11 and Year 12 studies culminate in the award of the South Wales (NSW) Higher School Certificate. This credential leads to students being awarded an Australian Tertiary Admission Rank (ATAR). These credentials offer direct entry into Australian tertiary institutions and also universities around the world. AISM graduates have been accepted into universities in Australia, United Kingdom, USA, New Zealand, Malaysia, Korea, Japan, Canada, Pakistan, Germany and other countries.

In Year 11, students must study a total of 12 units: six 2-unit subjects or five 2-unit subjects and two 1-unit subjects (this must include a 2-unit course of English). Students cannot choose new subjects in Year 12, but must continue studying the subjects they studied in Year 11. Students, however, have the option of dropping back to 10 units in Year 12.

English is compulsory in both Year 11 and Year 12. English, as a 2-unit course, is currently available at three levels – English Advanced, English Standard and English as a Second Language (ESL). Students choosing ESL must ensure they meet the guidelines regarding eligibility. There is also a 1-unit Extension English course offered. Students must study Advanced English to be eligible for extension courses in Year 11 and Extension 2 English in Year 12.

### 2-unit courses currently on offer at AISM include:

Mathematics Standard	Economics	Design and Technology
Mathematics Advanced	Legal Studies	Visual Arts
Biology	Music	Drama
Chemistry	French	PDHPE
Physics	Chinese	Society and Culture
Geography	English Standard	Modern History
Software Design and Development	English Advanced	
Business Studies	English as an Additional Language/Dialect (EAL/D)	

### 1-unit course currently on offer at AISM include:

Mathematics Extension 1
Mathematics Extension 2 (Year 12 only)
Extension 1 English
Extension 2 English (Year 12 only)

## Pathway Planning

At AISM, planning starts formally in the last year of Middle School when students are selecting their elective subjects for Year 9. AISM gives students access to personalised career guidance and planning. Students are tracked throughout the Senior School using a combination of career software, interviews, institutional visits and fairs. In their final year, students are guided individually through the tertiary entrance procedures for their chosen country and institution. Furthermore, access to the Futurewise program profiles students along with their aptitudes and abilities related to different careers. All the support and guidance helps to ensure that students have the best possible start to life after school.



## Outdoor Education

Another important element of the Senior School is outdoor education through the Camp Program. Years 9 and 10 have a five-day camp, usually in Term 1. Year 9 and Year 10 attend camps in Vietnam and an outback camp in Australia, where emphasis is placed on service learning and physical challenges. (Year 12 students undertake a personal leadership program in Sydney). School camps are considered an integral part of the curriculum and attendance at camp is mandatory.

Leadership is also an important aspect of Senior School as students take on opportunities to lead various school events and projects. There are formal leadership opportunities for the School, Sports, Community, Art, House Captains and Student Representative Council (SRC). There are also informal opportunities through the wide array of activities that take place throughout the year.

The combination of a strong and recognised curriculum, well-defined pathway (career) planning and a focus on the whole child, produces AISM graduates that are prepared for the changing world that will be their future.



# Assessment and Reporting

AIMS uses data from assessments to help meet the individual needs of students. Different types of assessments at AIMS include:

## Assessments



### Formative

- Standardised diagnostic assessments
- Twice annually



### Ongoing

- Observations, tests and assignments
- Group work and projects



### Summative

- Internal examinations
- Class-based assessments
- External examination - Higher School Certificate (Years 11 & 12 only)
- ISA assessments (Years 3 to 10)

## Reporting



### Diagnostic Reports

Twice annually



### Formal End of Semester Reports

Twice annually



### Parent-Student-Teacher Learning Conferences

Twice annually

# University Destinations

Over the past few years, AIMS graduates have been accepted into the following top Universities around the world.

30%

### THE WORLD

- University of St. Andrews (UK)
- George Mason University (USA)
- Tokyo University (Japan)
- Korea University (Korea)
- University of British Columbia (Canada)

65%

### AUSTRALIA

- Australian National University
- University of Melbourne
- University of Sydney
- University of New South Wales
- RMIT University

5%

### MALAYSIA

- Taylor's University
- Monash University
- Nottingham University
- University of Technology Malaysia
- Curtin University Sarawak

\* Above is only a selection of universities attended by our students.



# AUSTRALIAN INTERNATIONAL SCHOOL MALAYSIA

## 2023 TERM DATES & SCHOOL HOURS

### 2023 SCHOOL TERM DATES

Term Dates for AISM Students	Semester 1		Semester 2	
	Term 1	Term 2	Term 3	Term 4
First Day of Term	25 Jan (Mon)	18 Apr (Mon)	20 Jul (Mon)	3 Oct (Mon)
Last Day of Term	31 Mar (Fri)	23 Jun (Fri)	15 Sept (Fri)	7 Dec (Fri)
Term Breaks	1 Apr - 17 Apr	24 Jun - 19 July	16 Sept - 2 Oct	8 Dec - TBC
	2 weeks	3 weeks	2 weeks	6 weeks

### SCHOOL HOURS

School Hours	School Starts	School Ends	
		Non Co-Curricular Program	Co-Curricular Program
Monday	8.45am	3.10pm	3.20pm – 4.20pm
Tuesday	8.45am	3.10pm	3.20pm – 4.20pm
Wednesday	8.45am	3.10pm	3.20pm – 4.20pm
Thursday	8.45am	3.10pm	3.20pm – 4.20pm
Friday	8.45am	3.10pm	None

### RECESS AND LUNCH TIME

#### Junior School

10.30am – 11.00am : Recess Break

12.30pm – 1.30pm : Lunch Break

#### Middle & Senior School


11.00am – 11.30am : Recess Break

1.30pm - 2.10pm : Lunch Break

# AUSTRALIAN INTERNATIONAL SCHOOL MALAYSIA

## TUITION & FEES FOR THE ACADEMIC YEAR 2023

- All fees must be paid in Malaysian Ringgit (RM). Payments in the form of cheques or bank drafts should be addressed to **AUSTRALIAN INTERNATIONAL SCHOOL SDN. BHD.**
- For payments through bank remittance, the important details are as follows:

<b>OCBC Bank (Malaysia) Berhad</b> <b>Account No. : 1061022193</b> <b>Bank Contact No. : 603.2034 5034</b> <b>Swift Code: : OCBCMYKLXXX</b>	 <b>Biller Code: 24885</b> <b>Ref-1: (</b> <b>Ref-2: (*Refer to invoice)</b> JomPAY online at Internet and Mobile Banking with your Current or Savings account
--	--

For overseas transfer, please include additional amount in view of foreign exchange and bank charges. These are borne by the Sender. Please email/ fax/ send by hand a copy of the transaction slip to Finance Dept., quoting your child's name, class and invoice no. on the said copy.

E-mail: [accounts@aism.edu.my](mailto:accounts@aism.edu.my) | Fax no: **+603-8949 5020**

- Cost of text book hire, exam fee and a basic stationery pack are included in the tuition fee. The cost of uniform is not included.
- **ESL Fee** of RM1,500.00 per term is chargeable to those students requiring ESL support.
- **Family (Sibling) Discount**
- Siblings are entitled to a discount on the Admission Fee. It is only applicable to siblings who are still studying in the school. A sibling is defined as a legal brother or sister of a child enrolled in the school.

No. of Children	Admission Fee (Applicable to NEW students)	Tuition Fee Only
1st sibling (2nd born)	30% Discount	5% Discount
2nd sibling (3rd born)	50% Discount	5% Discount
3rd and subsequent siblings (4th born onwards)	75% Discount	5% Discount

- **A rebate of three percent (3%) on Term 2, Term 3 and Term 4 tuition fees is applicable for advance payment of annual tuition fees paid on the first day of Term 1.** Advance payment of tuition fees will be refunded upon withdrawal of a child, subject to fulfilment of the withdrawal notice as stated above.
- All fees are subject to annual reviews and the **Australian International School Malaysia** reserves the right to revise the terms and conditions on an annual basis.
- Loan facilities for fee payment are available from HSBC. Please enquire for more information.

## IMPORTANT DATES IN THE FINANCE CALENDAR FOR 2023

Important Dates	Term 1	Term 2	Term 3	Term 4
First Day of Term	Wednesday 25 January 2023	Tuesday 18 April 2023	Thursday 20 July 2023	Tuesday 3 October 2023
Last Day of Term	Friday 31 March 2023	Friday 23 June 2023	Friday 15 September 2023	Thursday 7 December 2023
Tuition and fee Payment due date*	Wednesday 25 January 2023	Tuesday 18 April 2023	Thursday 20 July 2023	Tuesday 3 October 2023
<b>Withdrawal Notice</b> Last date to inform AISM if the child is leaving at the end of the term.	Wednesday 25 January 2023	Tuesday 18 April 2023	Thursday 20 July 2023	Tuesday 3 October 2023

\* A surcharge of 5% flat rate on all outstanding fees after payment due date.



# AUSTRALIAN INTERNATIONAL SCHOOL MALAYSIA

## TUITION & FEES FOR THE ACADEMIC YEAR 2023

APPLICATION FEE (NON-REFUNDABLE)	RM (Ringgit Malaysia)
Nursery and Preparation	1,000.00
Foundation to Year 12	1,300.00
Payable upon submission of the Application for Admission Form	

ADMISSION FEE (NON-REFUNDABLE)	RM (Ringgit Malaysia)
A one-off payment prior to the student commencing classes	20,000.00
New students who are eligible for direct entry into Year 12	Waived

DEPOSIT (REFUNDABLE)
An equivalent of one term's tuition fee is required as deposit (refer to the table below). The amount is to be topped up as the tuition fee increases according to year level.
Note: Deposit is refundable provided one term's written notice of withdrawal is given in advance. The said notice must be received and acknowledged by the Admissions Office on or prior to the commencement of the term the student will be withdrawn; failing which the deposit paid shall be forfeited. Please refer to the terms and conditions as stated on the Application for Admission Form.

TUITION FEES
All fees paid are non-refundable once the term starts and it is not prorated. All Senior HSC examination fees are included in the Tuition Fees.

TUITION FEES PER TERM (4 TERMS PER ACADEMIC YEAR)
There are 4 terms in an academic year.

### Early Learning Centre

Year Level	Tuition Fee per term (RM)	Technology Fee per term (RM)	Annual Tuition and Technology Fee (RM)	Camp Fee (RM)	Deposit (RM)
Nursery	10,338	188	42,104	N/A	10,338
Preparation	10,338	188	42,104	N/A	10,338

### Junior School

Year Level	Tuition Fee per term (RM)	Technology Fee per term (RM)	Annual Tuition and Technology Fee (RM)	Camp Fee (RM)	Deposit (RM)
Foundation	13,108	505	54,452	N/A	13,108
Year 1	13,843	505	57,392	N/A	13,843
Year 2	14,426	505	59,724	N/A	14,426
Year 3	15,183	505	62,752	TBA	15,183
Year 4	15,785	505	65,160	TBA	15,785
Year 5	16,817	505	69,288	TBA	16,817

### Middle School

Year Level	Tuition Fee per term (RM)	Technology Fee per term (RM)	Annual Tuition and Technology Fee (RM)	Camp Fee (RM)	Deposit (RM)
Year 6	17,864	505	73,476	TBA	17,864
Year 7	18,462	505	75,868	TBA	18,462
Year 8	19,060	505	78,260	TBA	19,060

### Senior School

Year Level	Tuition Fee per term (RM)	Technology Fee per term (RM)	Annual Tuition and Technology Fee (RM)	Camp Fee (RM)	Deposit (RM)
Year 9	20,565	505	84,280	TBA	20,565
Year 10	21,246	505	87,004	TBA	21,246

### Senior School - Higher School Certificate (Pre-University)

Year Level	Tuition Fee per term (RM)	Technology Fee per term (RM)	Annual Tuition and Technology Fee (RM)	Camp Fee (RM)	Deposit (RM)
Year 11	21,443	505	87,792	TBA	21,443
Year 12 (3 payments per year only)	28,590	*673	87,789	-	28,590

- Nursery to Year 11 fees are invoiced quarterly and must be paid on or before the first day of each term.
- Year 12 total tuition fees\* are invoiced over 3 instalments before the beginning of Term 1, Term 2 and Term 3.

# AUSTRALIAN INTERNATIONAL SCHOOL MALAYSIA

## 2023 BUSSING INFORMATION

On enrolment, students and parents are provided with the full comprehensive transport services policy and procedure.

AIMS outsources its transportation services to 2 local bus operators, **Highway Liner** and **Jai VMaks**.

### OPERATOR CONTACT

The school bus operators can be contacted at:

**HIGHWAY LINER TRAVEL & TOUR**

**Mr Mutthu**

**012-391 6060**

**highwayliner@gmail.com**

### ROUTE

• Mont Kiara	Highway Liner
• Ampang / Seputeh / Bangsar / PJ	Highway Liner
• Suasana Sentral (KL Sentral)	Highway Liner
• Old Klang Road / Sri Petaling / OUG / Kuchai Lama / Bukit Jalil	Highway Liner
• Bandar Kinrara / Pusat Bandar Puchong / Puchong Jaya / Puchong	Highway Liner
• Prima / Puchong Utama / Bukit Puchong / Puncak Jalil / IOI Putrajaya	Highway Liner

### PAYMENT AND TERMINATION

- All payments** for school bus service are to be **paid directly to the Operators**.
- Parents / Guardians who wish to terminate the service are required to provide **a thirty (30) days termination notice in writing** to the bus operator and the school.

### NEW STUDENTS

- For safety and emergency reasons, we need to have the local contact number of parents / guardians clearly in the Booking Form.
- Parents / Guardians are required to inform the bus operators and submit the Bus Booking Form at least **10 working days** prior to taking the school bus.
- Procedure of the submission of the bus booking form:
  - Please scan the QR code to fill up the bus bookings form.
  - Operators will confirm the availability of the seat to parents within 7 working days from the submission date.
  - Parent are responsible to update any changes bus arrangement directly to the bus operators. .



Scan here

### PICK UP AND DROP OFF POINT

- Buses will arrive and depart from the designated pickup and drop off points at the scheduled times and will not wait for late students or their parents / guardians.
- Parents / Guardians are asked to ensure students are at the designated pick up / drop off points on time. Parents / Guardians are recommended to arrive at the pickup / drop off points at least **5 minutes** prior to the arrival of the bus. Bus will not depart from the designated stop before the scheduled time.
- On all routes pickups and drop off times will be subjected to weather, traffic and other unforeseen circumstances.

Please forward any queries, complaints and feedback to the **Student Services (Bussing) Helpdesk** at **bussing@aism.edu.my** or please call 03-8949 5037.



# AUSTRALIAN INTERNATIONAL SCHOOL MALAYSIA

## 2023 BUSSING FEES

Route	Area of Coverage	Rate per Term (MYR)
		Common
Mont Kiara	Serene, Danai, Ayuria, Sutera, Casa Kiara 1, Palma, Banyan, Izen, Amarin Kiara Hills, 7E Designer, Designer, Ceriaan, Almaspuri, MK10, Pines, Regency (Common), MK28, Damai, MK11 Nusantara, Lumina, Meridian, Aman, Pelangi Seni, Tiffani, Astana, Angkukupuri, Duta Tropika, Kiara View, Gateway Kiaramas, Kiara 22 (Opposite 7-11)	RM 1,840
Bangsar	Pantai Medical, Nomad, BSC, The Capri	RM 1,783
KL Sentral	Suasana Sentral	RM 1,783
Seputeh	Sierra, Tiara Seputeh Guard Hse, Garden Seputeh	RM 1,783
Petaling Jaya	KWSP Jln Gasing	RM 1,840
Ampang 1 A	The Pearl, Avare, Dua Residency, Hampshire Park, Ampang Park, Quadro Residence	RM 1,783
Ampang 1 B	The Marc, Ascott, Jalan Kia Peng	RM 1,783
Ampang 2	Brunsfeld Embassy View, Regal Villa, Lanson Place, U-Thant Gallery, U-Thant Residence, Seri Hening, Flamingo Hotel (Petron Station)	RM 1,783
Sri Petaling	BHP Station (Common), Endah Parade	RM 1,599
OUG	Seringin Residences	RM 1,955
Bukit Jalil	Vista Komanwel, Treez Villa, Taman Esplanade, Pavillion	RM 1,610
Bandar Kinrara	TBA	RM 2,174
Pusat Bandar Puchong		RM 2,047
Puchong Jaya		RM 2,047
Puchong Prima		RM 2,358
Puchong Utama		RM 2,300
Bukit Puchong	Taman Meranti	RM 2,415
IOI Putrajaya	Putri Palm, Clio Residence	RM 1,380

\* A minimum of 8 travelers per route, the bus operators reserve the right to combine with other nearby routes.

\* After School Activities

### NOTE

- Payments for the bus service must be paid directly to the respective bus operators.
- Parents / Guardians who wish to terminate the service are required to provide a written notice to the bus operators thirty (30) days prior to the end of the term the student will be withdrawn.



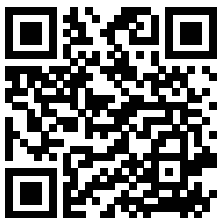
For Admissions Enquiries:

 **+603 8949 5000**

 **admissions@aism.edu.my**

For more information:

 **[www.aism.edu.my](http://www.aism.edu.my)**



Scan the QR code for  
the online application form.

